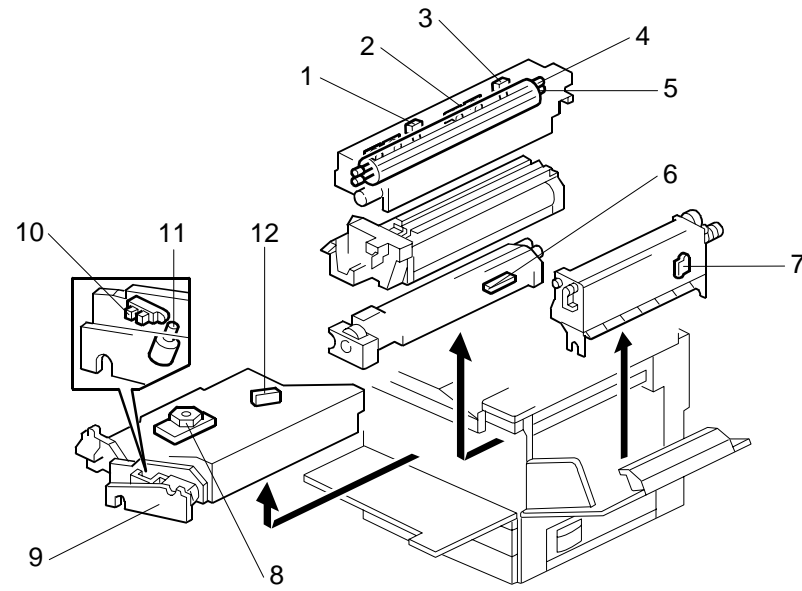
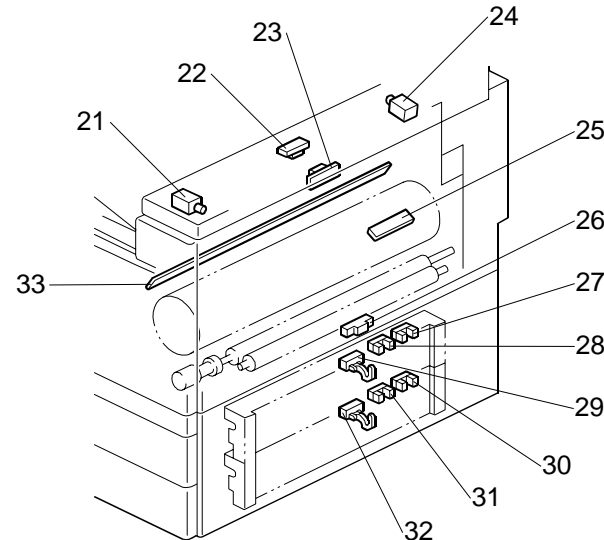


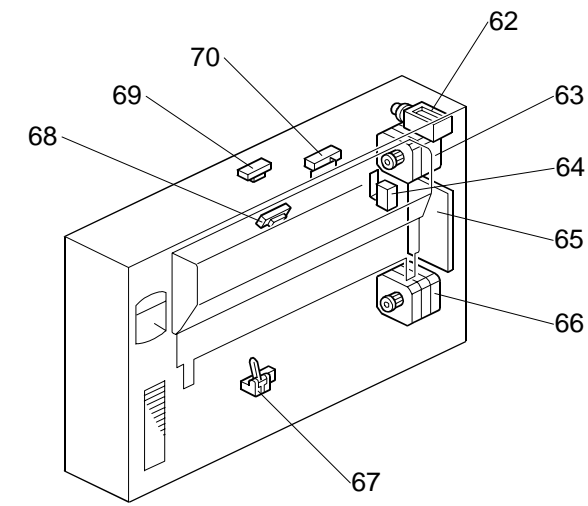
# ELECTRICAL COMPONENT LAYOUT MODEL A-P3 (G065)



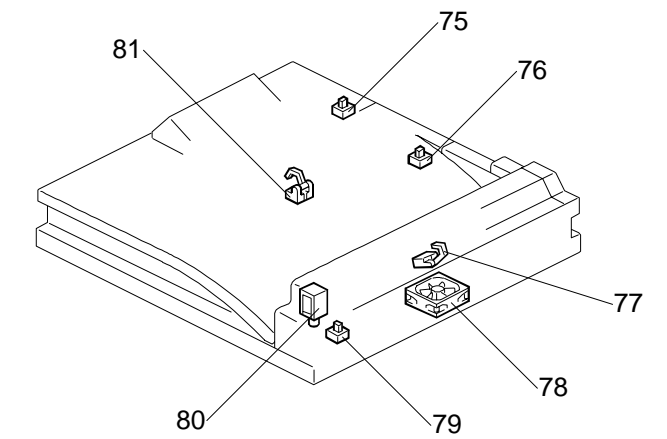
G065V904.WMF



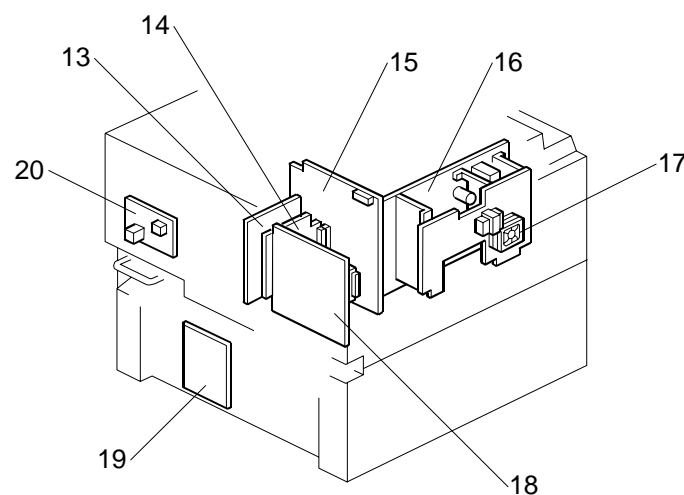
G065V905.WMF



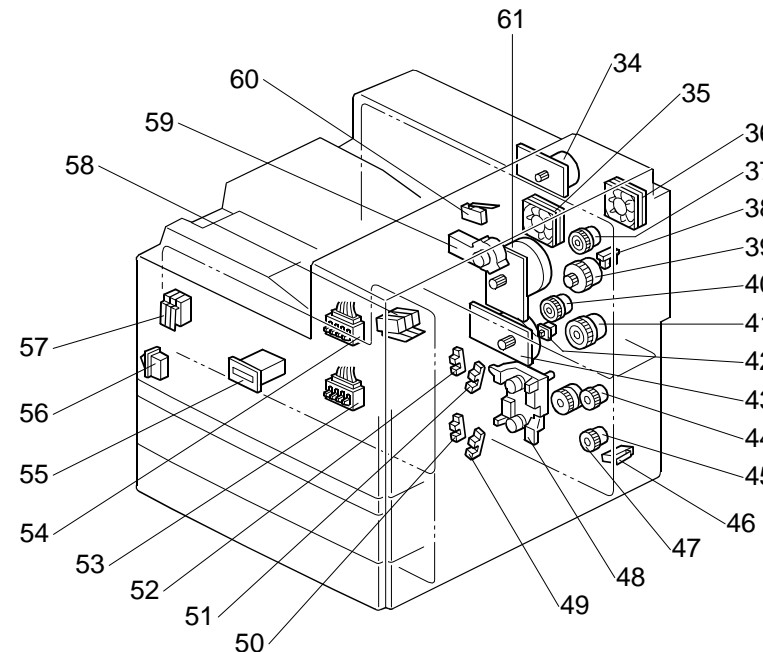
G065V907.WMF



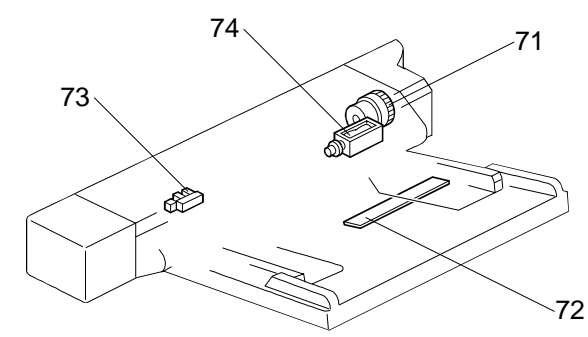
G065V909.WMF



G065V901.WMF



G065V906.WMF



G065V908.WMF

Symbol	Description	Index No.	P to P
<b>Printed Circuit Board</b>			
PCB1	BICU (Base Engine & Image Control Unit)	15	A4
PCB2	Controller	18	D7
PCB3	Mother Board	14	C6
PCB4	PSU (Power Supply Unit)	16	F8
PCB5	IOB (Input/Output Board)	13	H4
PCB6	PFB (Paper Feed Control)	19	B11
PCB7	High Voltage Supply	20	G5
PCB8	LDDR (Laser Diode Driver)	9	A6
PCB9	Duplex Main	65	H2
<b>Magnetic Clutches</b>			
CL1	Transfer Belt Contact	39	I9
CL2	Registration	41	G5
CL3	Relay	45	F12
CL4	Upper Paper Feed	44	G12
CL5	Lower Paper Feed	47	G12
CL6	By-pass Paper Feed	71	D12
CL7	Development	40	G6
CL8	Fusing/Exit	37	G5
<b>Motors</b>			
M1	Main	61	G4
M2	Paper Feed and Development	43	G5
M3	Fusing/Exit	34	G4
M4	Tray Lift	48	E12
M5	Polygonal Mirror	8	B6

Symbol	Description	Index No.	P to P
M6	LD Positioning	11	I8
M7	Cooling Fan	35	I3
M8	Exhaust Fan	36	I8
M9	Toner Supply	59	I7
M10	PSU Cooling Fan	17	G7
M11	Inverter	63	I1
M12	Transport	66	I1
<b>Sensors</b>			
S1	Upper Paper Height 1	52	B12
S2	Upper Paper Height 2	51	B12
S3	Lower Paper Height 1	50	B12
S4	Lower Paper Height 2	49	B12
S6	LD Unit Home Position	10	I8
S7	Toner Density (TD)	6	G6
S8	Paper Exit	22	I9
S9	Registration	26	G5
S10	Image Density (ID)	25	I7
S11	Upper Paper Lift	27	C12
S12	Lower Paper Lift	30	C12
S13	Upper Paper End	28	C12
S14	Lower Paper End	31	D12
S15	Upper Relay	29	C12
S16	Lower Relay	32	D12
S17	Transfer Belt Position	38	I9
S18	Fusing Unit Exit	23	J6

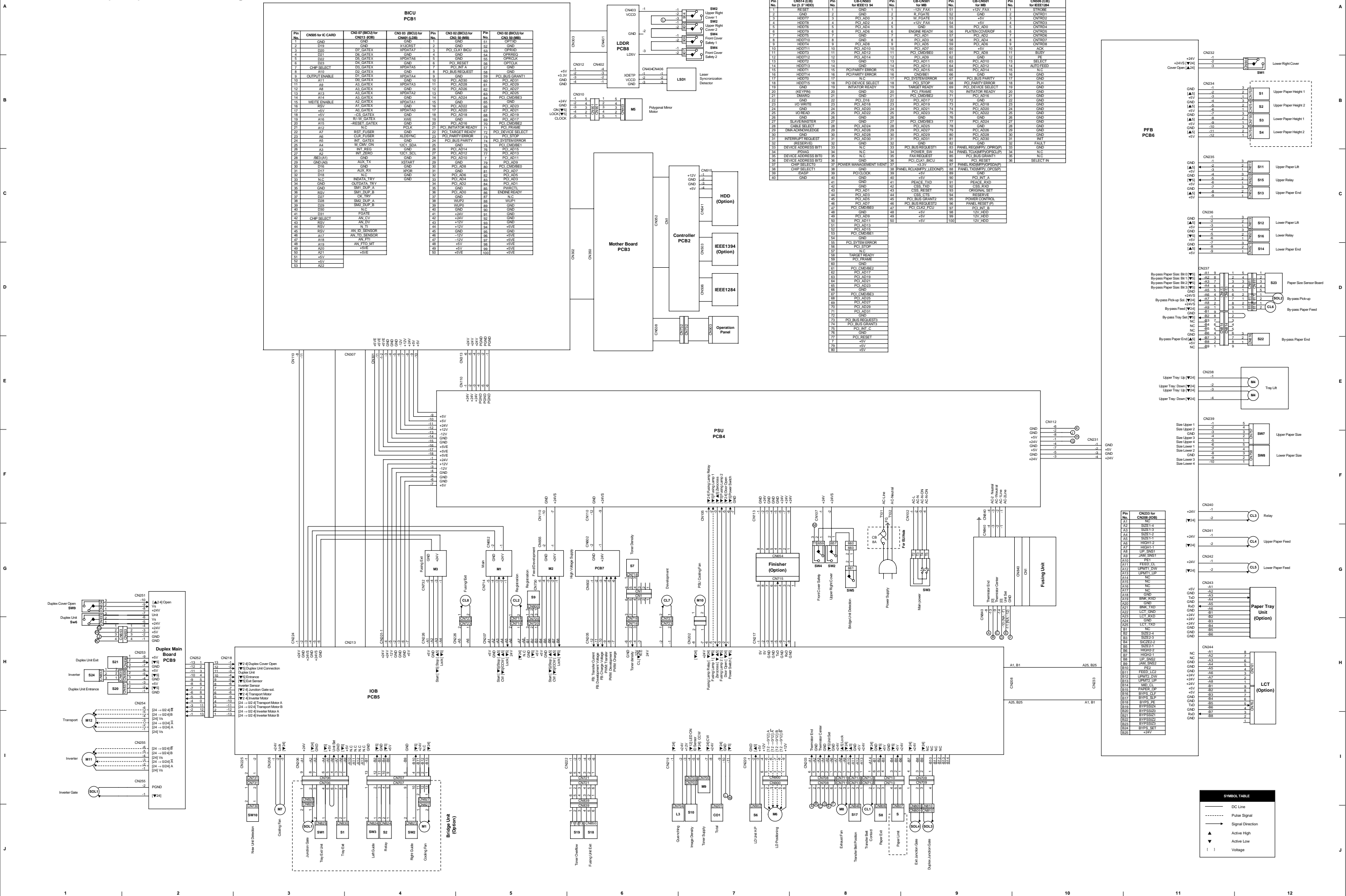
Symbol	Description	Index No.	P to P
S19	Toner Overflow	7	J6
S20	Duplex Unit Entrance	69	H1
S21	Duplex Unit Exit	67	H1
S22	By-pass Paper End	73	E12
S23	By-pass Paper Size	72	D12
S24	Inverter	68	H1
<b>Solenoids</b>			
SOL1	Inverter Gate	62	I1
SOL2	By-pass Pick-up	74	D12
SOL3	Duplex Junction Gate	21	J9
SOL4	Exit Junction Gate	24	J9
<b>Switches</b>			
SW1	Lower Right Cover	46	B12
SW2	Upper Right Cover	58	A7
SW3	Main Power	56	G8
SW4	Front Cover Safety	57	A7
SW5	Bridge Unit Detection	60	(C1)
SW6	Duplex Unit	64	G1
SW7	Upper Paper Size	54	F12
SW8	Lower Paper Size	53	F12
SW9	Duplex Cover Open	70	G1
SW10	New Unit Detection	42	J3
<b>Lamps</b>			
L1	Fusing (end)	4	(G9)
L2	Fusing (center)	5	(G9)

Symbol	Description	Index No.	P to P
L3	Quenching	33	I7
<b>Thermistors</b>			
TH1	Fusing (center)	1	(G9)
TH2	Fusing (end)	3	(G9)
<b>Thermostat</b>			
TS1	Fusing	2	(G9)
<b>Counter</b>			
CO1	Total	55	I7
<b>Others</b>			
LSD1	Laser Synchronization Detector	12	B7

## BRIDGE UNIT (B397)

Symbol	Description	Index No.	P to P
<b>Motors</b>			
M1	Cooling Fan	78	J3
<b>Sensors</b>			
S1	Tray Exit	77	J3
S2	Relay	81	J4
<b>Solenoids</b>			
SOL1	Junction Gate	80	J3
<b>Switches</b>			
SW1	Tray Exit Unit	79	J3
SW2	Right Guide	76	J4
SW3	Left Guide	75	J4

# MODEL A-P3 (G065) Point to Point Diagram



**SYMBOL TABLE**

- DC Line
- - - - Pulse Signal
- >- Signal Direction
- ▲ Active High
- ▼ Active Low
- I Voltage